



TEXAS

The University of Texas at Austin

Associate Dean for P-20 Education Initiatives

Position Profile



The Opportunity

The [University of Texas at Austin](#) seeks a visionary leader for the position of Associate Dean for P-20 Education Initiatives (ADPEI). The ADPEI will champion the work of strengthening mathematics and science education as a valuable investment in the future of the [College of Natural Sciences](#) and the University while positioning the [Dana Center](#)'s work as a priority for the College. While cultivating subject-matter expertise through ongoing involvements in such activities as teaching, research, national organizations, committee service, and/or professional societies, the ADPEI will bring coherence to and promote the range of CNS and other education initiatives across the University. They will identify and secure new and existing collaborations and partnerships that support the mission and vision of the Dana Center, the College of Natural Sciences, and The University of Texas at Austin.



UT Austin Campus

The College of Natural Sciences

UT Austin's largest college is also one of the biggest science schools in the nation. It is home to 15 programs ranked in the top 10 nationally with 669 faculty serving approximately 13,000 high-achieving undergraduate and graduate students. The College believes in small-community experiences and unmatched opportunities at scale. Students have the opportunity to join a community where research meets teaching—and innovation is everywhere. The College is home to leaders behind some of the most talked-about discoveries of a generation, the world's most powerful university supercomputer, the biggest undergraduate research program, and stand-out academics.

The Charles A. Dana Center

The Dana Center brings innovative thinking and best practices to support the transformation of education systems at scale through pedagogy, curriculum, 10-instruction, and professional learning. Drawing from decades of research and experience, the work centers on K–16 mathematics and science education with an emphasis on strategies for improving student engagement, motivation, persistence, and achievement. After nearly 30 years of hands-on experience in K–12 and higher education, the center understands what it takes to create the effective alignment of curriculum, instruction, policy, and practices.

P-20 Education Initiatives

P-20 education at The University of Texas System (UTS) prepares students for success in college and the workforce by connecting students from preschool through graduate school. The goals of these initiatives include increased college-going and graduation rates; improved educational and career opportunities; development of skills, attitudes, and understandings needed for college, career, and civic readiness; and positive educational outcomes for all students. These outcomes are pursued through:

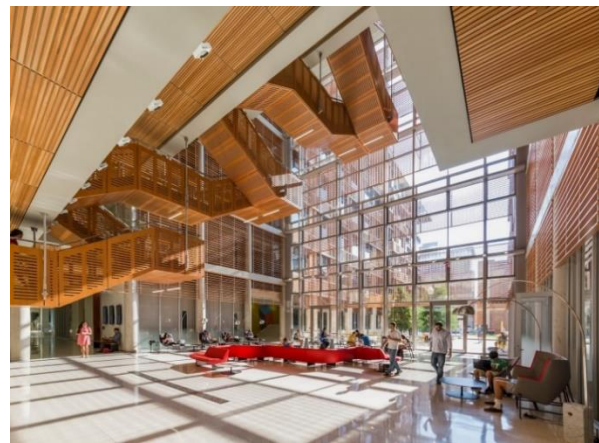
- **Partnerships:** P-20 programs collaborate between schools, businesses, and the community.
- **Career exposure:** Students are exposed to career options early on.
- **Work-based learning:** Students participate in work-based learning and projects to connect them to the community and businesses.

- **Internships and apprenticeships:** Students participate in internships and apprenticeships.
- **College credits:** Students may earn college credits and credentials while in high school.
- **Teacher development:** Teachers receive professional development

Role of the Associate Dean for P-20 Education Initiatives

Strategic Collaborations and Partnerships

- Maintain close relationships with fundraising and development personnel at The University of Texas at Austin to ensure they have accurate and complete understanding of priorities and possibilities related to P-20 impact initiatives.



College of Natural Sciences

- Build, facilitate and maintain connections and collaborations among other key P-20 outreach and impact initiatives across campus.
- Build, facilitate and maintain connections and collaborations among relevant faculty and key leadership within other Colleges, Schools, and Units (CSU's) across campus.
- Build, facilitate and maintain connections and collaborations among other university institutions and/or systems.
- Foster relationships and engage in activities with relevant national organizations, professional societies, service committees/task forces, government agencies, and state and national consortiums, etc.

Teaching and/or Research

- Maintain and grow some aspect(s) of subject matter expertise through teaching and or research, such as:
 - Instruction of an introductory service course each semester.
 - Instruction of a graduate seminar and or practicum each semester.

- Ongoing advisement and supervision of graduate student doctoral research and/or independent studies.
- Ongoing advisement and supervision of faculty fellows, postdocs, and/or research scientist.
- Proposal submission, funding securement, implementation, and publication of relevant research studies.

Dana Center Advocacy



Literacy First Program – Dana Center

- Serve as an advisor and strategic thought partner to senior leadership at the Dana Center; identify opportunities for Dana Center staff to engage with national organizations to share the mission of the Center's work and other P –20 joint University initiatives; contribute to strategic planning; and support organizational decision-making.
- Foster and grow internal leadership at the Dana Center through listening, communicating, and connecting current work and future opportunities.
- Facilitate strategic introductions and prospective collaborations among Dana Center leaders and relevant national networks and organizations.
- Represent the Dana Center's work, vision and potential in the national landscape of education policymakers, funders, practitioners, etc.; stay informed about the evolving work of the Dana Center to represent mission, vision and goals in accurate and compelling ways.
- Cultivate and maintain strong relationships with key constituencies and leaders in the fields of math/ science education, research, and philanthropy on behalf of the Center's work; maintain connection to, engagement with, and understanding of relevant education practices, policies, challenges, and opportunities across the nation via professional organizations, conferences, meetings, societies, etc.
- Bolster, inform, validate, and expand the work of the Dana Center through strategic partnerships with The University of Texas at Austin faculty, University leadership, research & outreach organizations/centers/ institutes, and state agencies; explore and catalyze new partnerships with other higher education institutions and systems.

Required Qualifications

The successful candidate will have:

- PhD in math, science, education, education policy or related field.
- Established relationships with national math and science education organizations and research universities.
- Ten years of experience in the math, science, or education field with depth of knowledge of education related research and practice.
- Proven track record as a strategic thought partner and advisor, supporting and advancing organization missions and visions.
- Excellent communication skills, verbal and written.

Relevant education and experience may be substituted as appropriate.

Preferred Qualifications

- Faculty status (tenured/tenure-track or professional/teaching track) at a research university.
- Established relationships with math and science related funding partners.
- Established relationships with corporate and foundation funding organizations.



University Tower

The University of Texas at Austin



UT Austin Student Life

By virtue of its public mission, culture of innovation, location, size and rich history, The University of Texas at Austin (UT) is one of the highest-impact universities in the world. As the top public university in Texas and the flagship of The University of Texas System, UT is an influential catalyst for scientific, economic and societal progress.

Founded in 1883, the University's main campus spans 431 acres with a community of almost 54,000 students, 3,500 faculty and more than 15,000 staff. In addition to its main campus, UT extends to the J.J. Pickle Research Campus, the Lady Bird Johnson Wildflower Center, the McDonald Observatory in West Texas, the Marine Science Institute in Port Aransas, and several cultural and historic sites across the state.

The University is a leader in energy, AI, entrepreneurship and national security, and its graduate programs in accounting, petroleum engineering, geology, Latin American history and sociology of population rank No. 1 in the United States. UT is among the top producers of doctoral degrees in the nation, and its alumni and faculty include Nobel laureates. In total, UT offers more than 150 undergraduate degree programs and 230 graduate programs across 19 colleges and schools in the sciences, arts, humanities and professions:

- Cockrell School of Engineering
- College of Education
- College of Fine Arts
- College of Liberal Arts
- College of Natural Sciences
- College of Pharmacy
- Dell Medical School
- Graduate School
- Jackson School of Geosciences
- LBJ School of Public Affairs
- McCombs School of Business
- Moody College of Communication
- School of Architecture
- School of Civic Leadership
- School of Information
- School of Law
- School of Nursing
- School of Undergraduate Studies
- Steve Hicks School of Social Work

A globally recognized research leader and member of the Association of American Universities, UT attracted more than \$1 billion for research in 2023–24. The University is home to the fastest supercomputers for open research in the world. The Department of Defense designated UT’s Applied Research Laboratories as one of five University Affiliated Research Centers for the Navy, and the University is a major collaborator with the Army Futures Command, among many other government agencies and organizations. The lab of Jason McLellan, a faculty member in the Department of Molecular Biosciences, was critical to the development of COVID–19 vaccines.

RANKINGS AND RESEARCH: BY THE NUMBERS

- No. 7 among American public universities, U.S. News & World Report
- No. 6 among U.S. universities in research financed by the National Science Foundation
- No. 3 in the world for most patents granted (UT System–wide), National Academy of Inventors

- No. 18 for scientific research, Nature Index
- No. 19 most innovative school, U.S. News & World Report
- 55 graduate programs ranked among the top 10, U.S. News & World Report
- \$1.04 billion in research expenditures
- 7,000+ peer-reviewed articles published
- 116 patents issued, U.S & foreign
- 194 invention disclosures filed

The University's holdings comprise more than 170 million objects, including a Gutenberg Bible and other rare books, manuscripts, photographs, artworks and artifacts from natural history to pop culture in eight museums and 12 libraries. The Lyndon B. Johnson Presidential Library was the first presidential library to be located on a college campus.

Over the past decade, the campus has undergone a significant modernization and expansion of its research, academic and community spaces. Recent projects added new state-of-the-art facilities, high-tech labs and dynamic collaboration spaces that are transforming the student and faculty experience. The University's large and diverse student body, storied history, strong and supportive community and rich tradition have given rise to a proud alumni base of more than 500,000. Among UT's many well-known alumni are Michael Dell, Laura Bush, Jenna Bush Hager, Neil deGrasse Tyson, Matthew McConaughey, Kevin Durant, Wes Anderson, Robert Rodriguez, Renee Zellweger, Owen Wilson, Marcia Gay Harden, Sanya Richards Ross, Sam Rayburn, James Baker, Kay Bailey Hutchison, Brené Brown, Jim Allison, Rex Tillerson, Bill Moyers and Walter Cronkite, as well as current Texas Gov. Greg Abbott.



UT Austin Campus

The City of Austin

Located beside the picturesque Hill Country of Central Texas, Austin is the state capital and the 4th largest city in Texas, which is among the top-five most diverse states in the nation. As the 11th-largest city in the United States, Austin is a vibrant and rapidly growing



Texas Hill Country

economic hub, widely regarded as a friendly, active and innovative community.



Austin Cityscape

It is consistently acclaimed as a national creative center that attracts talented people from across the world. Austin is home to corporate headquarters for Fortune 500 companies such as Oracle, Dell, Whole

Foods, Tesla and many successful tech startups. Major companies such as Amazon, AMD, Apple and Google chose Austin as home for major research and development offices in large part to draw from the highly skilled talent the University produces.

Nomination & Application Process

Compensation

Salary will be competitive and commensurate with qualifications and experience.

How to Apply

Greenwood Asher & Associates® is assisting The University of Texas at Austin in this search. Applications and nominations are now being accepted. The search will be conducted with a commitment of confidentiality for candidates until finalists are selected. Initial screening of applications will begin immediately and will continue until an appointment is made. **For best consideration, please submit application materials by April 25, 2025**

Application materials should include:

- A letter of interest that clearly states the applicant's qualifications for the position
- A current résumé/curriculum vitae

Please submit application materials (as separate PDF files) to ADP20Education@greenwoodsearch.com

Inquiries, questions, and nominations regarding this opportunity should be directed to Jeremy Duff and Denice Perdue with Greenwood Asher & Associates®.

Jeremy Duff, Senior Executive Search Consultant & Search Manager
jeremyduff@greenwoodsearch.com

Denice Perdue, Senior Executive Search Consultant
deniceperdue@greenwoodsearch.com

Greenwood Asher & Associates®

Greenwood Asher & Associates

42 Business Centre Drive, Suite 206
Miramar Beach, Florida 32550
850-650-2277
greenwoodsearch.com

The University of Texas at Austin, as an equal opportunity/affirmative action employer, complies with all applicable federal and state laws regarding nondiscrimination and affirmative action. The University is committed to a policy of equal opportunity for all persons and does not discriminate on the basis of race, color, national origin, age, marital status, sex, sexual orientation, gender identity, gender expression, disability, religion, or veteran status in employment, educational programs and activities, and admissions.